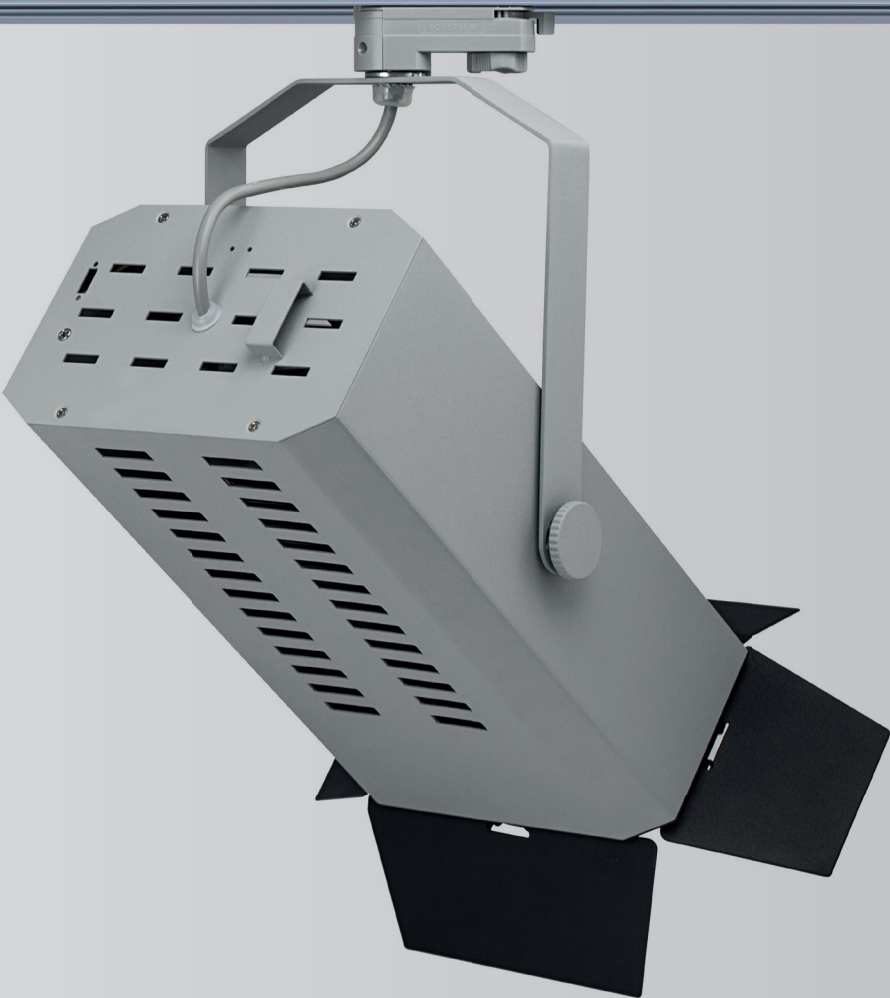


Forte
3-Phase Track Light
LED



Technical specifications and certifications including: Up to 100W Power, Up to 12680lm Lumen, 3000K/4000K CCT, CE, RoHS, 355°/90° rotation, IP20, 0.8m range, and safety symbols.

Table with 4 columns: LED Power, CRI, CCT, LED Lumen, LED Efficacy, LOR, Driver, and Reflector. It details technical specifications for the light fixture.

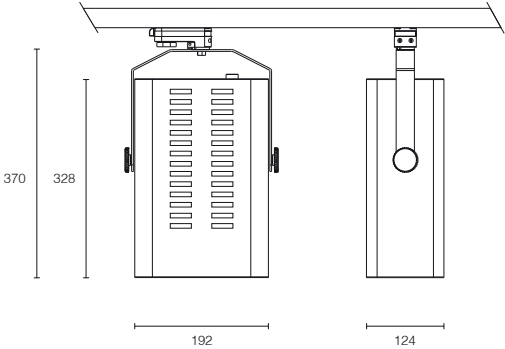


Table with 4 columns: Article No., Description, Article No., Description. It lists accessories and optional features like barn doors and dimmable drivers.

Table with 9 columns: Article No., Product Name, Color, LED Lumen, CCT, CRI, Cooling, LED Power, Reflector. It lists the main product variants in grey and white.