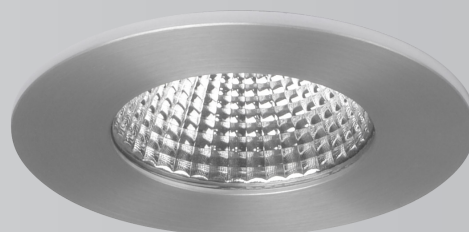
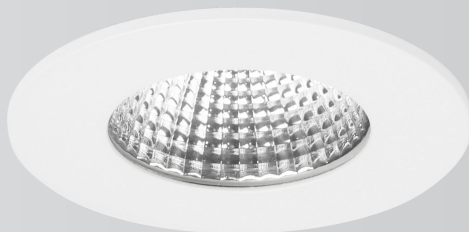


Aqua


LED Spot Light

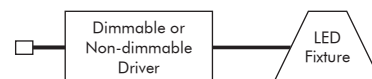
Fixed Round

Cutout
Size



Product Information

| | | |
|--------------|-----------------------------------------------------------------------------------------------------|--------|
| System Power | 8.4W | |
| CRI | >90Ra | |
| CCT | 2700K | 3000K |
| LED Lumen | 520lm | 550lm |
| LED Efficacy | 84lm/W | 89lm/W |
| Driver | 350mA Non-Dimmable or Dimmable Driver (included) | |
| Reflector |  38° included | |



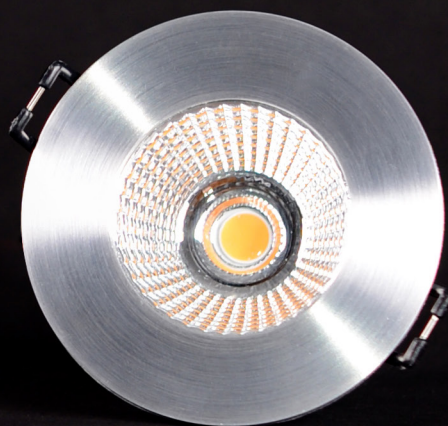
System includes: fixture, driver and quick connector



Quick connector (included)

On Request

| Article No. | Description |
|-------------|----------------------------------------------------|
| - | 1-10v or DALI dimmable driver available on request |

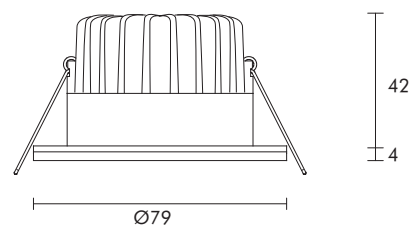
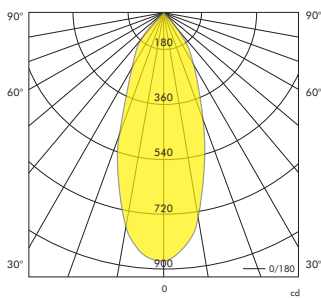


Aqua CRI90 8.4W 3000K

| H [m] | | [lux] | Beam [° cm] | Field [° cm] |
|----------|--|-------|----------------|-----------------|
| 1 | | 863 | 70 | 180 |
| 2 | | 216 | 140 | 360 |
| 3 | | 96 | 210 | 550 |
| 4 | | 54 | 280 | 730 |
| 5 | | 35 | 350 | 910 |

Beam (50%) Angle: 38°

Field (10%) Angle: 84°



| Article No. | Product Name | Color | LED Lumen | CCT | CRI | Cooling | LED Power | Reflector | Cutout Size |
|------------------------------------|--------------------------------|-----------|-----------|-------|-------|---------|-----------|-----------|-------------|
| 2.11.1690 / 2.11.1691 ¹ | LED spot Aqua IP65 round fixed | Aluminium | 520lm | 2700K | >90Ra | Passive | 6W | 38° | Ø 60mm |
| 2.11.1693 / 2.11.1694 ¹ | LED spot Aqua IP65 round fixed | White | 520lm | 2700K | >90Ra | Passive | 6W | 38° | Ø 60mm |
| 2.11.1696 / 2.11.1697 ¹ | LED spot Aqua IP65 round fixed | Aluminium | 550lm | 3000K | >90Ra | Passive | 6W | 38° | Ø 60mm |
| 2.11.1699 / 2.11.1700 ¹ | LED spot Aqua IP65 round fixed | White | 550lm | 3000K | >90Ra | Passive | 6W | 38° | Ø 60mm |

¹ Article number with ¹ indicates dimmable driver is included.